

# ECSC 2010 Mate in 2 composing tourney

Judge: David Shire

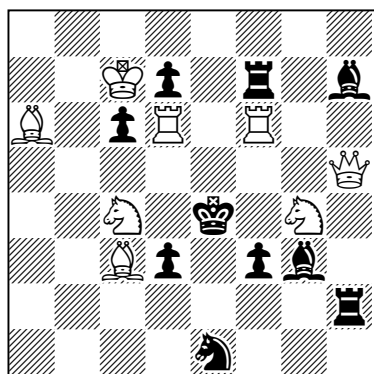
Twomovers are required that demonstrate different aspects of arrival correction strategy enacted by White:

## (a) Tertiary Arrival Correction

Example problem:

**A. C. Reeves**

2 HM, *British Chess Magazine*, 1965



Mate in 2

The arrival of a white piece on e5 unpins wRd6, introducing a threat of 2.Rd4.

Try 1.Be5? **Bf2(x)** 2.Sd2 but 1...Sc2!(y)

Try 1.Sce5? **Sc2(y)** 2.Bxd3 but 1...Bf2!(x)

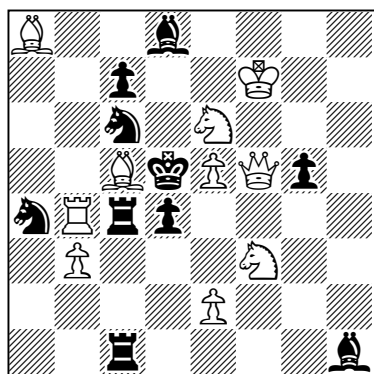
Key 1.Sge5! **Bf2(x)** 2.Qg4; 1...Sc2(y) 2.Qxf3

The two tries and key *must* be made by different White units to the *same* square. The logic of tertiary correction is found when the consequences of the thematic defence x (1...Bf2) are analysed. A mate follows x in first try but this is refuted by y (1...Sc2!) The second try corrects by arranging a mate for y but now 1...x! refutes. The key again provides for y but now x is met by a *changed* mate. This change is crucial to the tertiary logic. The changed mate following y is pleasing but *not a thematic necessity*.

## (b) Tertiary Arrival Threat Correction

**A. C. Reeves**

*The Problemist*, 2009



Mate in 2

A “neutral” capture of bPd4 eliminates the possibility of an *en passant* defence.

Try 1.Bxd4? (>2.e4-A) but 1...Sc5!

Try 1.Sfxd4? (>2.Bxc6-B and not 2.e4?-A) but 1...Rxc5!

Key 1.Sexd4! (>2.e6-C and not 2.e4?-A nor 2.Bxc6?-B)

1...Rxc5 2.e4-A; 1...Sxc5 2.Bxc6-B

(1...Kxc5 2.Rb5)

The two tries and key *must* be made by different White units to the *same* square. The logic of tertiary threat correction is to be found in the sequence of threat avoidance; Try? (>2.A) Try? (>2.B-2.A?) and Key! (>2.C-2.A?/2.B?) The transfer of A and B to variation mates post-key is highly desirable but *not a thematic necessity*.

Another feature here is that these transfers occur following the defences that refuted the tries. This is pleasing but once again *not a thematic necessity*.

It is anticipated that tertiary arrival correction will prove to be the easier challenge. The tourney will be judged in one or two sections depending on the number of entries. If there is just the one award the judge will regard settings of tertiary arrival threat correction with greater sympathy.

Entries to Michael McDowell, 8 Commercial Road, Westcliff-on-sea, Essex, SS0 0QJ, Great Britain  
([mmcdchess@freeuk.com](mailto:mmcdchess@freeuk.com)) no later than 12<sup>th</sup> March 2010.